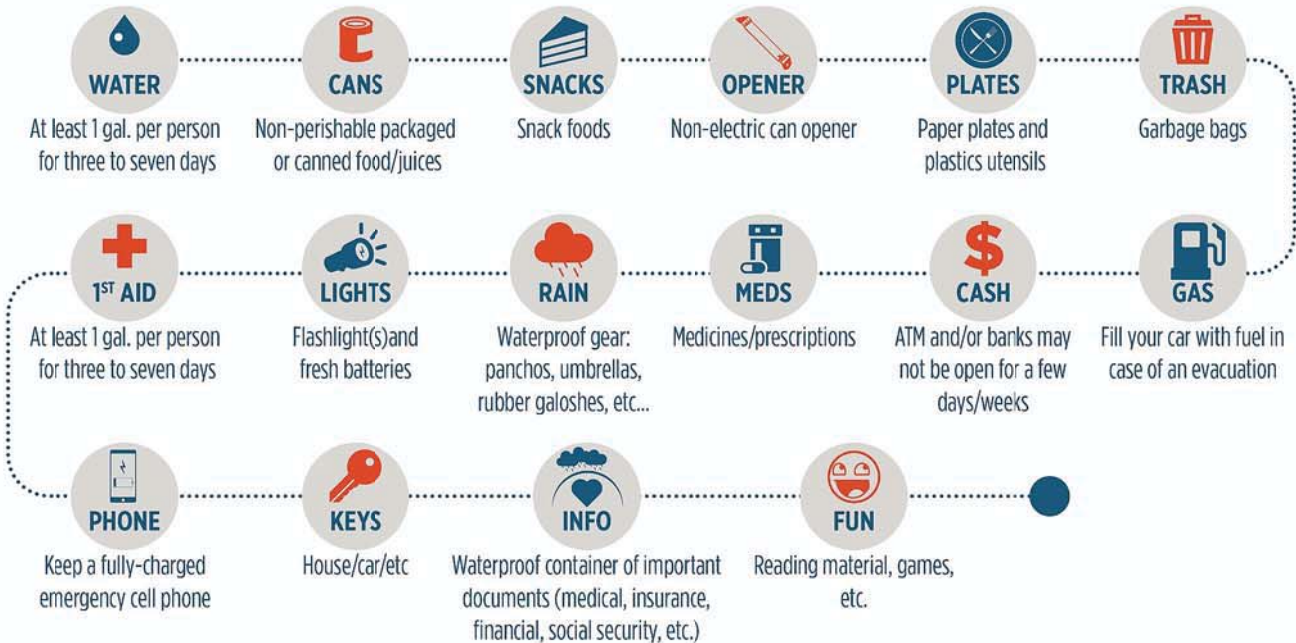


PREPARING FOR A HURRICANE

GATHER PERSONAL SUPPLIES:



WHEN YOU EVACUATE:

- CONTACT FAMILY/FRIENDS AS TO THE SITUATION
- LEAVE IN DAYLIGHT IF POSSIBLE
- SECURE/LOCK HOME OR APARTMENT; REMOVE EVERYTHING FROM BALCONIES
- PLACE TOWELS ON ALL WINDOW AND DOOR SILLS IN CASE OF WATER
- DO NOT TAPE WINDOWS, THIS WILL NOT STRENGTHEN THEM
- TURN OFF ALL WATER FAUCETS
- DISCONNECT ALL ELECTRICAL ITEMS AT THE SWITCHES IN THE BREAKERS PANEL BOX (EXCEPT REFRIGERATOR)
- REMOVE ANTENNA(S) OR SATELLITE DISH, BE CAREFUL NOT TO TOUCH ELECTRICAL WIRE
- HAVE A PRIMARY AND SECONDARY EVACUATION ROUTE (TRAFFIC MAY BE HEAVY)
- RELOCATE ASAP PRIOR TO WINDS/RAIN BECOMING TOO DANGEROUS TO GO FROM OUTSIDE STAIRWELL TO INSIDE
- BRING ANY OF THE PROVISIONS LISTED THAT CAN BE MANAGED; ADD A PILLOW AND BLANKET

WE STRONGLY RECOMMEND YOU EVACUATE IN THE EVENT OF A HURRICANE. IF YOU CHOOSE TO REMAIN, PLEASE REMEMBER THAT YOU DO SO AT YOUR OWN RISK.

SHOULD YOU CHOOSE TO STAY:

- CLEAN, STERILIZE AND FILL AVAILABLE CONTAINERS WITH WATER FOR EMERGENCY DRINKING PURPOSES
- FILL BATHTUB WITH WATER FOR BATHING AND TO FLUSH THE COMMODE
- MOVE TO AN INTERIOR ROOM/AREA OF YOUR UNIT WITHOUT WINDOWS
- BE AWARE THAT AS THE HURRICANE APPROACHES, THE WATER IN THE BUILDING WILL BE SHUT DOWN
(THIS IS TO PREVENT CONTAMINATED WATER FROM ENTERING THE MAIN LINES DURING/AFTER THE STORM)
- DO NOT USE ELEVATORS, USE STAIRWELLS